

PROVISIONAL ANSWER KEY

Question 7/2024/OL

Paper Code:

Category 267/2023

Code:

Exam: Higher Secondary School Teacher Chemistry (SR for ST)

Date of Test 12-01-2024

Department Kerala Higher Secondary Education

Question1:-Gold dissolves in aqua regia to form which of the following compounds?

A:- $H[AuCl_4]$

B:- $AuNO_3$

C:- $H[Au(NO_3)_4]$

D:-None of these

Correct Answer:- Option-A

Question2:-Which system does White Phosphorous (P_4) belong to?

A:-Closso

B:-Nido

C:-Arachno

D:-None of these

Correct Answer:- Option-B

Question3:- $CaCuSi_4O_{10}$ (Egyptian blue) is a

A:-Pyrosilicate

B:-Sheet Silicate

C:-Cyclic Silicate

D:-None of these

Correct Answer:- Option-B

Question4:-Borazole has the _____ bonds.

A:-6 sigma and 9 pi bonds

B:-12 sigma and 3 pi bonds

C:-9 sigma and 6 pi bonds

D:-None of these

Correct Answer:- Option-B

Question5:-In Castner's process, electrolysis of the following is done

A:-Fused Sodium Nitrite

B:-Fused Caustic soda

C:-Fused Sodium Carbonate

D:-None of these

Correct Answer:- Option-B

Question6:-For Hydrogen, the Ionisation Energy is of the same order as that of

A:-Alkali metals

B:-Alkaline earth metals

C:-Halogens

D:-None of these

Correct Answer:- Option-C

Question7:-Donor atoms in Hard Lewis bases have

A:-High electronegativities

B:-Low Polarisabilities

C:-Low Electronegativites

D:-High electronegativities and Low polarisabilities

Correct Answer:- Option-D

Question8:-Oxy-hemoglobin's red color is caused mainly by

A:-Metal to Ligand charge transition

B:-Ligand to Metal charge transition

C:-Pure d-d- transition

D:-None of these

Correct Answer:- Option-C

Question9:-NMR of nitrogen (nuclear spin 1) has

A:-No lines

B:-1 line

C:-2 lines

D:-3 lines

Correct Answer:- Option-D

Question10:-Identify the microwave inactive species

A:- Cl_2

B:-HBr

C:-CO

D:-HCl

Correct Answer:- Option-A

Question11:-Identify the most unstable species among the following

A:- $Mn(CO)_5$

B:- $HMn(CO)_5$

C:- $[Mn(CO)_5]^-$

D:- $Mn(CO)_5Cl$]

Correct Answer:- Option-A

Question12:-Identify the one having no metal-metal bond

A:- Al_2Cl_6

B:- Hg_2Cl_2

C:- $K_2Re_2Cl_8$

D:-None of these

Correct Answer:- Option-A

Question13:-J values which are possible for 3D term symbol are

A:-2

B:-3

C:-4

D:-None of these

Correct Answer:- Option-B

Question14:-A metal ion involved in dioxygen transport in biological systems other than iron is

A:-Copper

B:-Cobalt

C:-Magnesium

D:-None of these

Correct Answer:- Option-A

Question15:-Which of the following has 4 metal-metal bonds?

A:- $Co_2(CO)_8$

B:- $Ru_3(CO)_{12}$

C:- $[Re_2Cl_8]^{2-}$

D:- $Fe_2(CO)_9$

Correct Answer:- Option-C

Question16:-Which of the following metal ion is present in Carbonic anhydrase?

A:-Iron

B:-Copper

C:-Manganese

D:-Zinc

Correct Answer:- Option-D

Question17:-For Simple Cubic lattice, the packing fraction in percentage is around

A:-45

B:-52

C:-94

D:-None of these

Correct Answer:- Option-B

Question18:-The Miller indices for the plane responsible for first Bragg's peak (the plane giving the smallest Bragg angle) for a FCC lattice will be

A:-001

B:-110

C:-111

D:-002

Correct Answer:- Option-C

Question19:-Though according to Band Theory, Mg should be an insulator, it is in practice a conductor. The reason for this is

A:-Availability of unfilled 3p orbitals

B:-Availability of filled 3p orbital

C:-Overlapping of filled orbitals 2p and 3s

D:-Overlapping of filled 3s and empty 3p orbitals

Correct Answer:- Option-D

Question20:-Which of the following cannot be accelerated in a particle accelerator?

A:-Electron

B:-Proton

C:-Alpha particle

D:-None of these

Correct Answer:- Option-D

Question21:-Neutrons on being trapped by Hydrogen nuclei forms

A:-Positron

B:-Deuterium

C:-Beta rays

D:-None of these

Correct Answer:- Option-B

Question22:-Identify the chemical involved in the inorganic pigment known as "Yellow Ochre"?

A:-Iron oxide

B:-Cadmium Sulphide

C:-Cobalt chromate

D:-None of these

Correct Answer:- Option-A

Question23:-Which phase is characterized by a helical structure in Inorganic liquid

crystals?

A:-Nematic

B:-Cholesteric

C:-Smectic

D:-None of these

Correct Answer:- Option-B

Question24:-Which of the following statements are true with reference to inverse spinels having A and B sites?

A:-A sites are empty

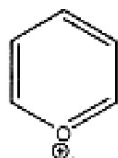
B:-B sites are empty

C:-Both A and B sites are occupied by cations

D:-None of these

Correct Answer:- Option-C

Question25:-Name the given compound



A:-Furan

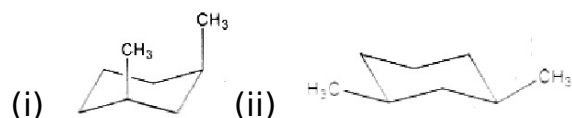
B:-Furan cation

C:-Pyrylium cation

D:-THF

Correct Answer:- Option-C

Question26:-Which among the following is/are cis-1, 3-dimethyl cyclohexane?



A:-(i)

B:-(ii)

C:-both (i) and (ii)

D:-None of these

Correct Answer:- Option-C

Question27:-Which statement is false for Azulene?

A:-It is a nonbenzenoid aromatic compound

B:-It has a five membered ring

C:-It has an eight membered ring

D:-It is isomeric with Naphthlene

Correct Answer:- Option-C

Question28:-N-alkyl amide can be prepared by

A:-Sandmayers reaction

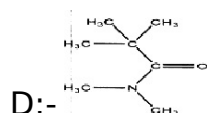
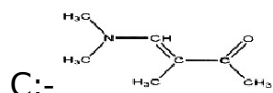
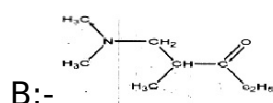
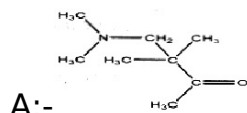
B:-Witting reaction

C:-Witting Horner

D:-Ritter reaction

Correct Answer:- Option-D

Question29:-The product obtained when formaldehyde is treated with methyl isopropyl ketone and dimethyl amine.



Correct Answer:- Option-A

Question30:-To which type does Chugaev reaction belong?

A:-a pyrolytic elimination

B:-a photochemical addition

C:-an anti elimination

D:-a syn addition

Correct Answer:- Option-A

Question31:-Which is/are the product obtained when 2-Bromobutane is treated with sodium ethoxide in ethanol?

A:-1-butene

B:-2-butene

C:-2-hydroxy butanol

D:-both (1) and (2)

Correct Answer:- Option-D

Question32:-The product/products obtained when para chlorotoluene is treated with KNH_2 with liquid ammonia

A:-o-toluidine

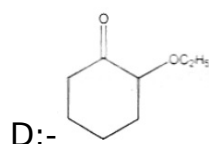
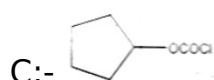
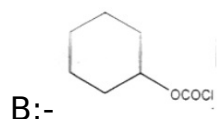
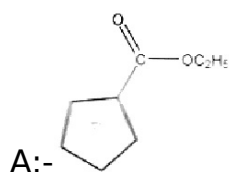
B:-m-toluidine

C:-p-toluidine

D:-both (2) and (3)

Correct Answer:- Option-D

Question33:-Which among the following is the product obtained when 2-chlorocyclohexanone when treated with sodium alkoxide undergo Favorskii rearrangement?



Correct Answer:- Option-A

Question34:-Haung-Minlon reaction is the modification of

A:-Rosenmund reaction

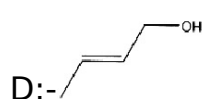
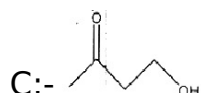
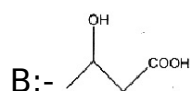
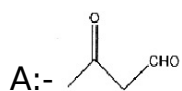
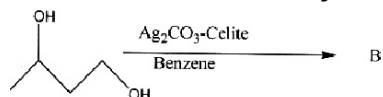
B:-Wolf Kishner reaction

C:-Clemmensen's reaction

D:-Reformatsky reaction

Correct Answer:- Option-B

Question35:-Identify the product B



Correct Answer:- Option-C

Question36:-The alcohol that do not react with Chromic acid

A:-butanol

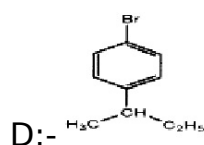
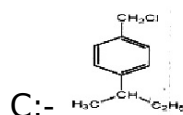
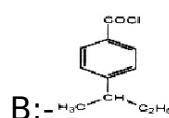
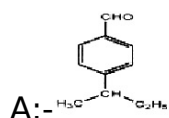
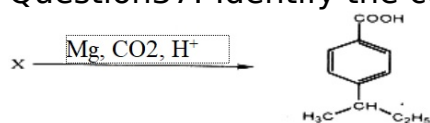
B:-isopropanol

C:-tertiary butanol

D:-neopentyl alcohol

Correct Answer:- Option-C

Question37:-Identify the compound X



Correct Answer:- Option-D

Question38:-Which statement about Hammett substituent constant is true for the substituted benzoic acid?

A:-If $\sigma_p = 0$ substituent has no effect

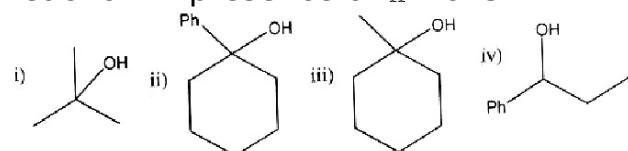
B:-If $\sigma_p = +$, substituent is electron withdrawing

C:-If $\sigma_p = -$, groups that donate electrons

D:-All of the above

Correct Answer:- Option-D

Question39:-Which of the following will give only one product if it undergoes E1 reaction in presence of H^+ ions



A:-(i)

B:-(ii)

C:-both (ii) and (iv)

D:-both (i) and (iii)

Correct Answer:- Option-C

Question40:-Protecting group for ketone

- A:-Ethylene glycol
- B:-Propylene glycol
- C:-1,3-propane dithiol
- D:-all the above

Correct Answer:- Option-D

Question41:-Which of the following transition takes place in the case of phosphorescence?

- A:- s_1 to s_0
- B:- s_1 to T_1
- C:- s_0 to s_2
- D:- T_1 to s_0

Correct Answer:- Option-D

Question42:-Which of the following is not true for intermolecular Paterno-Buchi reaction?

- A:-It is a photochemical reaction
- B:-The alkene get excited
- C:-It leads to formation of Oxetane
- D:-The carbonyl group is excited

Correct Answer:- Option-B

Question43:-Nature of molecular ion peak in mass spectrum of a bromo substituted hydrocarbon compound

- A:-One molecular ion peak with low intensity
- B:-Two molecular ion peak with intensity in the ratio 1 : 1
- C:-Two molecular ion peak with intensity in the ratio 2 : 1
- D:-Two molecular ion peak with intensity in the ratio 3 : 1

Correct Answer:- Option-B

Question44:-The substrate that can give cyclopentene on heating

- A:-Vinyl cyclopropane
- B:-Allylcyclopropane
- C:-Methyl cyclopentane
- D:-Cyclopentane

Correct Answer:- Option-A

Question45:-Which amino acid contains sulphur atom?

- A:-cysteine
- B:-arginine
- C:-asparagine
- D:-proline

Correct Answer:- Option-A

Question46:-Number of carbon atom present in sesqui terpenes.

A:-25

B:-30

C:-15

D:-40

Correct Answer:- Option-B

Question47:-Which among the following are fat soluble vitamins?

A:-A and D

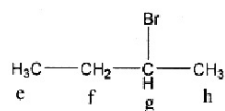
B:-A and C

C:-B and C

D:-B and K

Correct Answer:- Option-A

Question48:-The order of δ value for the ^1H NMR of 2-Bromobutane placed in different environment.



A:- $g > f > h > e$

B:- $e > f > g > h$

C:- $h > e > f < g$

D:- $g > f > e = h$

Correct Answer:- Option-A

Question49:-The Boyle temperature (T_B) of a vander Waals gas can be expressed as

A:- $T_B = Rb/a$

B:- $T_B = a/Rb$

C:- $T_B = 2a/Rb$

D:- $T_B = Rb/2a$

Correct Answer:- Option-B

Question50:-The total number of symmetry elements shown by a cubic crystal is

A:-9

B:-13

C:-22

D:-23

Correct Answer:- Option-D

Question51:-The Gibbs-Duhem equation for a system of two components of definite composition, at constant pressure and temperature will be

A: $-n_1 d\mu_1 + n_2 d\mu_2 = 0$

B: $-n_1 d\mu_1 + n_2 d\mu_2 = 1$

C: $-\mu_1 dn_1 + \mu_2 dn_2 = 1$

D: $-\mu_1 dn_1 + \mu_2 dn_2 = 0$

Correct Answer:- Option-A

Question52:-In the phase diagram (Pressure-Volume plot) of sulphur system, the degrees of freedom at each curve and triple point will be

A:-1 and 2 respectively

B:-2 and 1 respectively

C:-0 and 1 respectively

D:-1 and 0 respectively

Correct Answer:- Option-D

Question53:-The Hemholtz function (A) is related to molar partition function (Q) as

A: $-A = -kT \ln Q$

B: $-A = -RT \ln Q$

C: $-A = kT \ln Q$

D: $-A = -RT \ln Q$

Correct Answer:- Option-A

Question54:-The crystallographic experimental technique, selected area electron diffraction (SAED) is associated with

A:-Atomic Force Microscopy (AFM)

B:-Scanning Tunnelling Microscopy (STM)

C:-Transmission Electron Microscopy (TEM)

D:-Auger Electron Spectroscopy

Correct Answer:- Option-C

Question55:-Assuming complete ionization, what is the ionic strength of a solution which is 0.1 molal in NaCl and 0.2 molal in Na_2SO_4

A:-0.7

B:-0.6

C:-1.4

D:-0.3

Correct Answer:- Option-A

Question56:-In polarography, according to the Ilkovic equation the average diffusion current (i_d) is related to diffusion coefficient of the electroactive species (**D**) as

A: i_d proportional to D^2

B: i_d proportional to $D^{\frac{1}{2}}$

C:- i_d proportional to D

D:- i_d proportional to $D^{\frac{2}{3}}$

Correct Answer:- Option-B

Question57:-In a reaction of the type $P \rightarrow Q$, the initial concentration of Q is doubled and as a result, the half-life is halved. The order of the reaction is

A:-1

B:-1/2

C:-0

D:-2

Correct Answer:- Option-D

Question58:-At a particular temperature for an ionic reaction in a solvent of dielectric constant (ϵ_r), a straight line graph is obtained when

A:- $\ln k$ is plotted against $1/\epsilon_r^2$

B:- $\ln k$ is plotted against ϵ_r

C:- $\ln k$ is plotted against ϵ_r^2

D:- $\ln k$ is plotted against $1/\epsilon_r$

Correct Answer:- Option-D

Question59:-Consider a microscopic particle confined in a 1D-box with edge length (L). If edge length is doubled, the energy of the particle will be

A:-increased to double of initial energy

B:-reduced to half of initial energy

C:-reduced to 1/4 of initial energy

D:-remains unchanged

Correct Answer:- Option-C

Question60:-The ground state term symbols for nitrogen (N) atom and nitride anion (N^{3-}) are respectively

A:- $4S$ and $4F$

B:- $4S$ and $1S$

C:- $4P$ and $1S$

D:- $1S$ and $4F$

Correct Answer:- Option-B

Question61:-When NO molecule is changed to NO^+ ion, what happened to bond order and N-O stretching frequency?

A:-Bond order and N-O stretching frequency increases

B:-Bond order increases and N-O stretching frequency decreases

C:-Bond order decreases and N-O stretching frequency increases

D:-Bond order and N-O stretching frequency decreases

Correct Answer:- Option-A

Question62:-The point groups of the molecules BF_3 and NF_3 are

A:- C_{3v} and D_{3h} respectively

B:- D_{3h} and C_{3v} respectively

C:-both C_{3v} respectively

D:-both D_{3h} respectively

Correct Answer:- Option-B

Question63:-The selection rules for hyperfine transition in ESR spectroscopy are

A:- $\Delta m_s = \pm 1$ and $\Delta m_I = +1$

B:- $\Delta m_s = \pm 1$ and $\Delta m_I = 0$

C:- $\Delta m_s = 0$ and $\Delta m_I = \pm 1$

D:- $\Delta m_s = 1$ and $\Delta m_I = -1$

Correct Answer:- Option-B

Question64:-Which of the following is an efficient technique for liquid-liquid extraction?

A:-Thermogravimetry

B:-Craig method

C:-Chromatography

D:-Sonication

Correct Answer:- Option-B

Question65:-Which crown ether exhibits affinity for potassium ion?

A:-18-Crown-6

B:-15-Crown-4

C:-12-Crown-4

D:-15-Crown-5

Correct Answer:- Option-A

Question66:-Which are the common thermal analytical methods widely used to investigate polymers?

A:-DTA and GC

B:-TG and DSC

C:-TLC and HPLC

D:-None of the above

Correct Answer:- Option-B

Question67:-When a solid solute is added to a solid solvent, which is the observed colligative property?

A:-Elevation in boiling point

B:-Lowering of vapour pressure

C:-Depression in freezing point

D:-Osmosis

Correct Answer:- Option-C

Question68:-We should increase the number of trials while taking measurements and take their arithmetic mean to avoid

A:-accuracy

B:-precision

C:-correlation

D:-error

Correct Answer:- Option-D

Question69:-An example for 2D nanomaterial is

A:-fullerene

B:-graphite

C:-graphene

D:-carbon nanotube

Correct Answer:- Option-C

Question70:-Who is called as the father of green chemistry?

A:-Paul Anastas

B:-Arthur John

C:-Joe Huntsman

D:-Friederick Taylor

Correct Answer:- Option-A

Question71:-Which of the following is the best strategy for teacher development?

A:-Self awareness

B:-Self reflection on performance

C:-Adopting a single teaching method

D:-Applying different teaching techniques

Correct Answer:- Option-B

Question72:-Washback effect is related to

A:-diagnosis

B:-assessment

C:-aptitude

D:-drop out

Correct Answer:- Option-B

Question73:-Which of the following is NOT a learning strategy?

A:-Knowledge acquisition

B:-Active study

C:-Streaming

D:-Self monitoring

Correct Answer:- Option-C

Question74:-Identify the correct statements(s)

(i) The philosophy of Differentiated Instruction is adapting instruction to student differences

(ii) The principle of Differentiated Instruction is adopting instructional strategies based on the nature of curricular content

Choose the correct answer from the options given below :

A:-(i) alone

B:-(ii) alone

C:-Both (i) and (ii)

D:-Neither (i) nor (ii)

Correct Answer:- Option-A

Question75:-Which of the following learning aid is an object from real life?

A:-Realia

B:-Time line

C:-Diorama

D:-Concept map

Correct Answer:- Option-A

Question76:-Research designed to advance fundamental knowledge and to test theories is

A:-Basic research

B:-Action research

C:-Case study

D:-Survey research

Correct Answer:- Option-A

Question77:-Which of the following should NOT be considered as a source for selecting a research problem?

A:-Personal experience

B:-New developments

C:-Existing literature

D:-Technique of statistical analysis

Correct Answer:- Option-D

Question78:-When a researcher presents someone else's original idea without crediting, it is

A:-Self-plagiarism

B:-Direct plagiarism

C:-Paraphrasing

D:-Source based plagiarism

Correct Answer:- Option-C

Question79:-Which of the following statement is NOT true about Ethnographic research?

(i) Ethnographic research follows quantitative approach only

(ii) Ethnographic research process is cyclic in nature

(iii) Ethnographic research involves open ended inquiry

(iv) Data collection procedure involves participatory observation

Choose the correct answer from the options given below :

A:-Statement (i)

B:-Statement (ii)

C:-Statement (iii)

D:-Statement (iv)

Correct Answer:- Option-A

Question80:-Which of the following is best recommended for a good research report?

A:-Only the findings are to be written as the conclusion of the study

B:-Those findings of the study which are in tune with those of previous studies need to be presented

C:-Statements on all ethical measures taken need not be presented

D:-The findings of the study should reflect the arguments of the researcher

Correct Answer:- Option-D

Question81:-Which of the following state is an example for bicameral legislative system?

A:-Karnataka

B:-Punjab

C:-Tamilnadu

D:-Rajasthan

Correct Answer:- Option-A

Question82:-Article 270 is repealed from Indian Constitution on

A:-July 3, 2019

B:-August 5, 2019

C:-December 5, 2019

D:-January 1, 2020

Correct Answer:- Option-B

Question83:-Father of preamble of Indian constitution is

A:-Dr. B.R. Ambedkar

B:-Sardar Vallabhbhai Patel

C:-Dr. Rajendra Prasad

D:-Jawaharlal Nehru

Correct Answer:- Option-D

Question84:-The regional languages of India added in

A:-11th Schedule of Constitution

B:-8th Schedule of Constitution

C:-10th Schedule of constitution

D:-12th Schedule of constitution

Correct Answer:- Option-B

Question85:-Which of the following statement is/are correct about Indian Constitution?

- i. The concept of federalism have been taken from French constitution
- ii. The concept of fundamental rights have been taken from American constitution
- iii. Idea of residuary powers have been from Japanese constitution
- iv. The idea of concurrent list have been taken from Australian constitution

A:-only (i and iii)

B:-only (iii and iv)

C:-all the above (i, ii, iii and iv)

D:-only (ii and iv)

Correct Answer:- Option-D

Question86:-The symbol of Indian Constitution is

A:-Tiger

B:-Lion

C:-Himalayan brown bear

D:-Elephant

Correct Answer:- Option-D

Question87:-Who caligraphed the original preamble of Indian Constitution?

A:-H.V.R. Iyengar

B:-Sachidananda Sinha

C:-Prem Bihari Narain Raizada

D:-Dr. S. Rajendra Prasad

Correct Answer:- Option-C

Question88:-How many female members were present in the constitutional assembly

A:-10

B:-15

C:-12

D:-17

Correct Answer:- Option-B

Question89:-Which amendment provides 1/3 reservation for women in Loksabha and state assemblies

A:-106th Amendment

B:-105th Amendment

C:-107th Amendment

D:-108th Amendment

Correct Answer:- Option-A

Question90:-Council of states is also known as

A:-Loksabha

B:-Rajya sabha

C:-Niti Ayog

D:-Nirvachan Sadan

Correct Answer:- Option-B

Question91:-Film director who won life time achievement award of the 27th International Film Festival of Kerala in 2022.

A:-Kry zyszt of Zanussi

B:-Kim Ki Duk

C:-Bela Tarr

D:-Fernando Solanas

Correct Answer:- Option-C

Question92:-Which of the following novels are written by P Valsala

i. Arakkillam

ii. Koomankolly

iii. Oorukaval

iv. Gauthaman

A:-only (i and iv)

B:-only (i, iii and iv)

C:-only (i, ii and iv)

D:-only (ii and iv)

Correct Answer:- Option-C

Question93:-Which of the following statement is/are correct about the Travancore

i. Pandarapattam proclamation was in 1867

ii. Formation of legislative council was in 1888

iii. Department of agriculture was organised in 1910

iv. Establishment of Travancore university was in 1937

A:-only (iii and iv)

B:-only (i and iv)

C:-only (i, ii and iv)

D:-only (ii and iv)

Correct Answer:- Option-D

Question94:-Which of the following organizations were not started by Pandit Karuppan

- i. Kalyanadayini Sabha
- ii. Samasta Kerala Araya Mahajana Yogam
- iii. Valasamudhaya Parishkarani Sabha
- iv. Araya Vamsa Paripalana Yogam

A:-only (i and iii)

B:-only (i and iv)

C:-only (ii and iv)

D:-only (i, ii and iv)

Correct Answer:- Option-C

Question95:-Match Column I with Column II and select the correct option

| Column I | Column II |
|--------------------|-----------------------|
| a. Kerala Patrika | 1. C.P. Govindan Nair |
| b. Kerala Sanchari | 2. T.K. Madhavan |
| c. Gajakesari | 3. C.Kunjirama Menon |
| d. Desabhimani | 4. Murkoth Kumaran |

A:-a-3, b-1, c-2, d-4

B:-a-2, b-1, c-3, d-4

C:-a-3, b-1, c-4, d-2

D:-a-2, b-4, c-1, d-3

Correct Answer:- Option-C

Question96:-Which of the following statement is/are correct?

- i. The special conference of the S.N.D.P. Yogam held at Changanacherry passed the resolution in support of abstention
- ii. The meeting of Ezhava Youth league at Karungapally in 1933 was under the presidentship of C Keshavan
- iii. Shivagiri Mutt was established at Varkalai in 1903
- iv. Treatment of Tiyyas in Travancore was written by M. Govindan

A:-only (ii and iii)

B:-only (iii and iv)

C:-only (i, ii and iv)

D:-only (i and iii)

Correct Answer:- Option-D

Question97:-Which of the following statement is/are correct?

- i. Vaikam Satyagraha was to get approach road to Vaikam temple opened for the Avarnas
- ii. Suchindram temple Satyagraha was to get the temple opened to all Hindus
- iii. Guruvayur satyagraha started to get Guruvayoor temple open to all Hindus
- iv. Paliyam Satyagraha was to get the road in front of main residence of the Paliat

Achan open to Avarnas

A:-only (i, ii and iii)

B:-only (i and iii)

C:-only (ii and iv)

D:-all of the above (i, ii, iii and iv)

Correct Answer:- Option-B

Question98:-Which among the following is correct?

i. Annie Mascarene undertook train journey across Travancore state causing embarrassment to the government in September 1938

ii. Accamma Cheriyan led the state congress demonstration in Thiruvananthapuram on 23rd October 1938

iii. Elizabeth Kuruvilla was the fifth acting president of state congress in 1938

iv. A.V. Kuttimalu Amma was associated with Khadi pracharana sangh at Calicut

A:-only (ii, iii and iv)

B:-only (i and iv)

C:-only (i, ii and iv)

D:-only (ii and iii)

Correct Answer:- Option-A

Question99:-Match column I with column II and select the correct option

Column I

Column II

a. Kalyaninatakam

1. Kunhikuttan Thampuran

b. Chandrika

2. Kandathil Varghese Mappila

c. Lakshmi Kalyanam

3. Kochunni Thampuran

d. Ebraikutty

4. KC Kesava Pillai

A:-a-3, b-1, c-2, d-4

B:-a-2, b-3, c-1, d-4

C:-a-2, b-1, c-4, d-3

D:-a-3, b-1, c-4, d-2

Correct Answer:- Option-D

Question100:-Which of the following statement is/are correct

i. Rev. J Dawson made the first Shanar converts around Nagercoil

ii. Rev. Charles Mead was responsible for getting the right for Shanar Christian women to cover their breast with a distinctive jacket

iii. LMS missionaries campaign for the abolition of slavery in Travancore started in 1847

iv. The first government vernacular school in Trivandrum was opened in August 1866

A:-only (i, ii and iii)

B:-only (ii, iii and iv)

C:-only (i, iii and iv)

D:-all of the above (i, ii, iii and iv)

Correct Answer:- Option-B