

## FINAL ANSWER KEY

Question Paper Code: 32/2022/OL  
Category Code: 234/2021  
Exam: Assistant professor in Anaesthesiology (NCA- Muslim)  
Date of Test: 29-06-2022  
Department: Medical Education  
Alphacode: A

Question1:-According to the National Institute for Occupational Safety and Health (NIOSH), the operating room concentration of Nitrous oxide and volatile anaesthetics should be limited to \_\_\_\_ and \_\_\_\_ppm.

- A:-25, 0.5
- B:-10, 0.4
- C:-10, 0.5
- D:-25, 0.4

Correct Answer:- Option-A

Question2:-While setting up anaesthesia in an MRI suite, decision was made to double the extension tube length from the ventilator to the patient table. What is the effect of this act on dead space ventilation of the patient under anaesthesia?

- A:-It will decrease by half
- B:-It will double
- C:-It will increase by 4-fold
- D:-No change

Correct Answer:- Option-D

Question3:-A female baby is delivered with vacuum assistance. The amniotic fluid is meconium stained. Initial evaluation reveals a cyanotic limp newborn with a heart rate of 80 bpm, poor respiratory effort and grimacing in response to suctioning. The APGAR score for this baby is

- A:-10
- B:-5
- C:-3
- D:-0

Correct Answer:- Option-C

Question4:-Successful transition from foetal to neonatal circulation depends primarily on these factors except

- A:-Decreased pulmonary vascular resistance
- B:-Decreased systemic vascular resistance
- C:-Closure of shunts
- D:-Removal of placenta

Correct Answer:- Option-B

Question5:-A 30 year old G3P2 parturient with suspected placental abruption is being taken up for emergency caesarean section. Suddenly she develops breathlessness and hypotension. All these findings suggest amniotic fluid embolism except

- A:-Decreased Et Co2
- B:-Bleeding diathesis
- C:-Increased maternal pH
- D:-Uterine atony

Correct Answer:- Option-C

Question6:-A 35 year old G5P4 with irregular ante natal check up presents to labour room for safe confinement. As the labour progresses, her blood pressure was noted to be 166/110 mm Hg and HR sustained over 100 bpm. Which is the most appropriate option for acute treatment of preeclampsia in this patient?

- A:-Magnesium
- B:-Hydralazine
- C:-Labetalol
- D:-NTG

Correct Answer:- Option-C

Question7:-Regarding placental exchange and foetal uptake of drugs, all statements are true except

- A:-Drugs that readily cross the blood brain barrier will cross placenta also
- B:-Placental exchange of substances occurs principally via ion transport form maternal circulation to foetus
- C:-Minimizing the maternal blood concentration of a drug is the most important method of limiting the amount that ultimately reaches the foetus

D:-High protein binding explains the lower foetal to maternal ration, in case of Bupivacaine

Correct Answer:- Option-B

Question8:-Alkalinization of local anesthetics by adding sodium bicarbonate can result in faster onset of action with all except

A:-Lignocaine

B:-Ropivacaine

C:-Levobupivacaine

D:-Mepivacaine

Correct Answer:- Option-C

Question9:-Allodynia means

A:-Exaggerated response to noxious stimuli

B:-Pain in area that has no sensation

C:-Exaggerated response to a non-noxious stimulus

D:-Reduced sensitivity to pain

Correct Answer:- Option-C

Question10:-All the following statements are true regarding post operative shivering except

A:-Males are more prone to post operative shivering

B:-Thiopentone is more commonly associated with shivering than propofol

C:-Post operative shivering is not always associated with hypothermia

D:-Doxapram is effective in abolishing a post operative shivering

Correct Answer:- Option-B

Question11:-A patient who was received asleep in PACU after general anaesthesia develops desaturation. You are called in to assess the patient. You feel it is laryngospasm. The most appropriate first step in the management would be

A:-Attempt to pass an endotracheal tube

B:-Administer 1.0 mg/kg of succinyl choline intravenously

C:-Wait for 5 minutes, then reassess

D:-Jaw thrust manoeuvre with CPAP

Correct Answer:- Option-D

Question12:-A 44 year old female is posted for elective laparoscopic cholecystectomy. She gives history of Obstructive Sleep Apnoea. Post operative plan should include all except

A:-Extubate only after she is fully awake

B:-Application of post operative continuous airway pressure (CPAP)

C:-Administration of benzodiazepines in place of Opioids to reduce anxiety

D:-Continuous regional anaesthesia technique for post op analgesia

Correct Answer:- Option-C

Question13:-The most reliable indicator of pharyngeal muscle tone while assessing the reversal of neuro muscular blockade is

A:-Ability to protrude the tongue

B:-Ability to lift the head of the bed for a full 5 secs

C:-Ability to oppose incisor teeth strongly against a tongue depressor

D:-Ability to lift the leg off the bed

Correct Answer:- Option-C

Question14:-Which of the following intra operative factors is predictive of post operative delirium?

A:-Administration of Nitrous Oxide

B:-Haematocrit < 30%

C:-Technique of anaesthesia

D:-Intra operative hypotension

Correct Answer:- Option-B

Question15:-Considering the variable "Circulation" in Modified Aldrete Score, a score of 1 means

A:-Systemic Blood pressure  $\leq$  10% of pre anaesthetic level

B:-Systemic Blood pressure is 10-20% of pre anaesthetic level

C:-Systemic Blood pressure is 20-50% of pre anaesthetic level

D:-Systemic Blood pressure is  $\geq$  50% of pre anaesthetic level

Correct Answer:- Option-C

Question16:-Each Litre/min of oxygen flow through a nasal cannula increase the FiO<sub>2</sub> by

- A:-0.03
- B:-0.04
- C:-0.05
- D:-0.06

Correct Answer:- Option-B

Question17:-CO<sub>2</sub> diffuses through the cell membrane more rapidly than oxygen because

- A:-CO<sub>2</sub> is more soluble
- B:-There is greater concentration gradient across the membrane
- C:-It has an active transport mechanism
- D:-All of the above

Correct Answer:- Option-A

Question18:-Regarding temperature loss from the body

- A:-Sweating can increase heat loss by a factor of 10
- B:-With increasing humidity, loss due to sweating decreases
- C:-Both 1 and 2
- D:-None of the above

Correct Answer:- Option-C

Question19:-Regarding surgical diathermy, all the following statements are true except

- A:-High frequency current is necessary for its action
- B:-The same frequency of current flows through the return plate as through the forceps
- C:-There is risk of burning the patient at the place since the same current passes through the plate, as through the patient
- D:-Diathermy machines are not usually earthed

Correct Answer:- Option-C

Question20:-Regarding the expired CO<sub>2</sub>, as measured by capnography, the wrong statement is

- A:-Increases by exercise
- B:-Can be used as an indicator of Cardiac Output
- C:-Increases in air embolism
- D:-Both 1 and 2

Correct Answer:- Option-C

Question21:-The true statement regarding medical gas cylinder is

- A:-They are made of Molybdenum steel
- B:-The filling pressure in Oxygen cylinder is 13700 Kpa
- C:-The filling pressure in Nitrous oxide cylinder is 4400 Kpa
- D:-All of the above

Correct Answer:- Option-D

Question22:-Entonox

- (i) Entonox is a 50:50 mixture of oxygen and nitrous oxide with a filling ratio of 0.75
- (ii) Cylinders are blue with black/white shoulders
- (iii) Cylinders should be kept vertical
- (iv) Exhibits pointing effect

True are

- A:-i, ii, iii
- B:-i, iii, iv
- C:-ii, iii, iv
- D:-i, ii, iv

Correct Answer:- Option-B

Question23:-Soda lime

- A:-should be loosely packed
- B:-contains 1% Potassium Hydroxide to harden the granules
- C:-Sodium Hydroxide is the main constituent

D:-The reaction inside the canister is endothermic

Correct Answer:- Option-B

Question24:-According to Hagen Poiseuille equation, laminar flow is directly related to

A:-Viscosity of the fluid

B:-Length of the tube

C:-Square of the radius of the tube

D:-Pressure difference across the length of the tube

Correct Answer:- Option-D

Question25:-All of the following are measures of dispersion except

A:-Mean

B:-Range

C:-Variance

D:-Standard Deviation

Correct Answer:- Option-A

Question26:-Statistical power is defined as the probability of

A:-Accepting a null hypothesis when it is false

B:-Rejecting a null hypothesis when it is false

C:-Accepting a null hypothesis when it is true

D:-Rejecting a null hypothesis when it is true

Correct Answer:- Option-B

Question27:-Which of the following helps to minimize the random error in a research study?

A:-Adequate budget

B:-More than five investigators

C:-Limited study duration

D:-Adequate sample size

Correct Answer:- Option-D

Question28:-Submitting a manuscript to more than one journal the same time is known as

A:-Duplicate publication

B:-Peer review

C:-Simultaneous publication

D:-Self citation

Correct Answer:- Option-C

Question29:-Which among the following has a dual effect of increasing the gastric pH and decreasing the gastric volume to minimize the risk associated with aspiration?

A:-Ranitidine

B:-Metoclopramide

C:-Ondansetron

D:-Prochlorperazine

Correct Answer:- Option-A

Question30:-All of the following are contraindication to immersion extra corporeal shock wave lithotripsy except

A:-Harrington rod implants

B:-Positive pregnancy test

C:-Large calcified abdominal aortic aneurysm

D:-Abdominally placed rate responsive pacemaker

Correct Answer:- Option-A

Question31:-A 42 year old female is posted for extra corporeal shock wave lithotripsy for a very painful ureteric stone. The patient is requesting epidural anaesthesia for the procedure. Which of the following steps in epidural catheter placement should be avoided in this patient?

A:-Loss of resistance to air

B:-Loss of resistance to hanging drop

C:-Test dose injection

D:-Bolus dose of local anaesthetic

Correct Answer:- Option-A

Question32:-A 40 year old woman with a history of hypertension, headache, palpitation and nephrolithiasis is undergoing a parathyroidectomy for parathyroid adenoma. During induction of general anaesthesia, she develops severe hypertension and tachycardia. The most likely diagnosis is

- A:-Thyroid Storm
- B:-Carcinoid Syndrome
- C:-Adrenal insufficiency
- D:-Pheochromocytoma

Correct Answer:- Option-D

Question33:-Regarding hypothermia during cardio pulmonary bypass, all statements are true except

- A:-Core body temperature is usually reduced to 20-30 degree centigrade
- B:-Intentional hypothermia is always used following the initiation of CPB
- C:-Metabolic Oxygen requirements is usually halved for every 10 degree reduction in temperature
- D:-Profound hypothermia to a temperature of 15 - 18 degree centigrade allows total circulatory arrest for upto 60 minutes

Correct Answer:- Option-B

Question34:-Which among the following inhalational anaesthetics causes the least coronary vasodilatation?

- A:-Halothane
- B:-Isoflurane
- C:-Desflurane
- D:-Sevoflurane

Correct Answer:- Option-D

Question35:-The mechanism of 'y descent' in central venous pressure waveform is

- A:-Atrial emptying when tricuspid valve opens
- B:-Atrial contraction
- C:-Venous filling of right atrium
- D:-Relaxation of atrium after atrial systole

Correct Answer:- Option-A

Question36:-Adverse effects of hypothermia include all of the following except

- A:-Potentiation of Citrate toxicity
- B:-Irreversible coagulopathy
- C:-Platelet dysfunction
- D:-Depression of myocardial contractility

Correct Answer:- Option-B

Question37:-Coronary perfusion pressure is

- A:-Arterial systolic pressure minus left ventricular end diastolic pressure
- B:-Arterial systolic pressure minus left ventricular end systolic pressure
- C:-Arterial diastolic pressure minus left ventricular end diastolic pressure
- D:-Arterial diastolic pressure minus left ventricular end systolic pressure

Correct Answer:- Option-C

Question38:-Use of a pneumatic tourniquet can lead to following complications except

- A:-Tourniquet pain that is relieved by performing a peripheral nerve block
- B:-Compression nerve injury
- C:-Development of arterial thromboembolism
- D:-Pulmonary embolism

Correct Answer:- Option-A

Question39:-A 55 year old female with a medical history of hypertension, Diabetes Mellitus and recent transient ischaemic attack is posted for right shoulder replacement in the beach chair position. The surgeon is requesting for a hypotensive technique for reducing intra operative blood loss. Where is the location for placing the arterial transduce?

- A:-The level of the heart
- B:-Level of the external meatus
- C:-Level of the shoulder
- D:-None of the above

Correct Answer:- Option-B

Question40:-While positioning a patient for spine surgery in the prone position, all the statements are true except

- A:-The arms are kept at < 90° extension and flexion
- B:-The abdomen must be supported (Never permitted to hang freely)
- C:-The neck should be in neutral position
- D:-The eyes must be free of pressure and checked periodically

Correct Answer:- Option-B

Question41:-All of the following intra venous fluids are isotonic except

- A:-D5¼ Normal Saline
- B:-Ringer Lactate
- C:-Normal Saline
- D:-D5 Normal Saline

Correct Answer:- Option-D

Question42:-Transfusion related sepsis occur most commonly with the transfusion of

- A:-Platelets
- B:-Cryoprecipitate
- C:-Fresh Frozen Plasma
- D:-Packed RBCs

Correct Answer:- Option-A

Question43:-Types of autologous blood transfusion include all of the following except

- A:-Predeposited donation
- B:-Normovolemic hemo dilution
- C:-Intra operative blood salvage
- D:-Donor directed transfusion

Correct Answer:- Option-D

Question44:-Administration of Succinyl Choline can lead to hyperkalaemia in all of the following conditions except

- A:-Spinal Cord injury
- B:-Cerebral Palsy
- C:-Prolonged ICU stay
- D:-Burns

Correct Answer:- Option-B

Question45:-A bleeding patient was transfused 3 units of O negative packed RBCs as there was no time for blood typing and cross matching. Later the patient's blood group was found to be A+. If the patient requires further transfusion, which of the following should be transfused?

- A:-A negative PRC
- B:-A positive PRC
- C:-RhoGAM
- D:-O negative PRC

Correct Answer:- Option-D

Question46:-The estimated maintenance fluid requirement of a 10 year old child, weighing 35 kg is

- A:-35 ml/hr
- B:-75 ml/hr
- C:-100 ml/hr
- D:-70 ml/hr

Correct Answer:- Option-B

Question47:-The correct statement regarding the appropriate use of Ultrasound equipment during performance of regional anaesthesia is

- A:-Higher frequency ultrasound transducers provide deeper penetration
- B:-Higher frequency transducers provide higher image resolution
- C:-Linear array transducers are used for imaging deeper anatomical structures
- D:-Curvilinear transducers are designed to image superficial structures

Correct Answer:- Option-B

Question48:-A patient undergoing right mastectomy with axillary lymph node dissection was given T3-T5 paravertebral block for post operative analgesia. This patient was an alcoholic and in the PACU she develops right arm paraesthesia. Her vitals are stable and bilateral upper extremity pulse volumes are equal. The most likely diagnosis is

- A:-Alcohol withdrawal syndrome
- B:-Surgery related brachial plexus injury
- C:-Complication of Paravertebral block
- D:-None of the above

Correct Answer:- Option-B

Question49:-An absolute contra indication for electro convulsive therapy is

- A:-Hypertension
- B:-Recent MI less than 3 months
- C:-Aortic aneurysm
- D:-Recent Stroke < 3 months

Correct Answer:- Option-B

Question50:-The most sensitive monitor to detect air embolism is

- A:-Trans oesophageal ECHO
- B:-Increased end tidal nitrogen
- C:-Decreased end tidal carbon dioxide
- D:-Precordial Doppler sonography

Correct Answer:- Option-A

Question51:-All of the following decrease cerebral blood flow except

- A:-Propofol
- B:-Thiopentone
- C:-Etomidate
- D:-Ketamine

Correct Answer:- Option-D

Question52:-Electrophysiological monitor which is most resistant to anaesthetic agents

- A:-Somato sensory evoked potentials
- B:-Motor evoked potentials
- C:-Brain stem auditory evoked potentials
- D:-EEG

Correct Answer:- Option-C

Question53:-All of the following drugs can be give through endotracheal tube except

- A:-Epinephrine
- B:-Lignocaine
- C:-Surfactants
- D:-Calcium

Correct Answer:- Option-D

Question54:-The earliest and the most pathognomonic feature of malignant hyperthermia is

- A:-increased temperature
- B:-increased EtCO<sub>2</sub>
- C:-Tachycardia
- D:-Tachypnoea

Correct Answer:- Option-B

Question55:-Inadvertent intra thecal injection of 0.25% Bupivacaine following the placement of a caudal epidural in a 1-year-old child will present as

- A:-Bradycardia
- B:-Hypotension
- C:-Tachycardia
- D:-Oxygen desaturation

Correct Answer:- Option-D

Question56:-A 3 year old child weighing 16 kg is posted for inguinal hernia under caudal epidural block. The calculated dose of 0.25% Bupivacaine for the procedure will be

- A:-16 mL
- B:-8 mL

C:-12 mL

D:-20 mL

Correct Answer:- Option-B

Question57:-A 6 year old is undergoing a squint surgery with a Laryngeal Mask Airway (LMA) in place. 30 minutes into the procedure his heart rate is 60 per min, Blood Pressure is 90/60 mm Hg and the pulseoximeter reads 98%. The next step in the management is

A:-Increase FIO<sub>2</sub> to 1

B:-Administer Inj Atropine after informing the surgeon

C:-Replace LMA with endotracheal tube

D:-Do nothing as this normal for children

Correct Answer:- Option-B

Question58:-In Pressure Support Ventilation (PSV), inspiration ends and expiration begins when

A:-A pre-set tidal volume has been achieved

B:-A pre-set amount of time has passed

C:-Flow decreases to a pre-set level

D:-A pre-set airway pressure is achieved

Correct Answer:- Option-C

Question59:-A 40 year old man is on ventilator for Acute Respiratory Distress Syndrome (ARDS). The plateau pressure for the patient should ideally be kept below

A:-30 cm of H<sub>2</sub>O

B:-40 cm of H<sub>2</sub>O

C:-50 cm of H<sub>2</sub>O

D:-60 cm of H<sub>2</sub>O

Correct Answer:- Option-A

Question60:-The most common cause of death in the post operative period following Whipple's procedure is

A:-Myocardial infarction

B:-Intra peritoneal Haemorrhage

C:-Pulmonary embolism

D:-Pneumonia

Correct Answer:- Option-B

Question61:-The following is not a component of Prothrombin Complex Concentrate (PCC)

A:-Protein C

B:-Prothrombin

C:-Protein S

D:-Vit K dependent clotting factors

Correct Answer:- Option-B

Question62:-Regarding Carbetocin, all are true except

A:-It is a synthetic analogue of Oxytocin

B:-Acts by binding with G protein coupled receptors

C:-Half-life is 40 minutes

D:-Should be stored at 2-8° Centigrade

Correct Answer:- Option-D

Question63:-Choose the correct statement

A:-Venous Blood Pressure outside of Right atrium decrease the right ventricular preload

B:-Heart rate and ventricular filling are inversely related

C:-Greater the ventricular compliance, lesser is the ventricular filling

D:-When there is systolic dysfunction, the preload decreases and the ventricle ejects the normal volume of blood

Correct Answer:- Option-B

Question64:-Inhalational induction is faster in paediatric population because

A:-Large alveolar ventilation to FRC ratio

B:-Greater delivery of Cardiac output to vessel rich tissue

C:-Lower albumin and cholesterol lead to a reduction in blood gas solubility coefficient



D:-All of the above

Correct Answer:- Option-D

Question65:-Which among the following drugs show context insensitivity?

A:-Fentanyl

B:-Propofol

C:-Remifentanyl

D:-Ketamine

Correct Answer:- Option-C

Question66:-Regarding pharmacokinetics of propofol, all of the following statements are true except

A:-Clearance of propofol exceeds hepatic blood flow

B:-It is not a CYP3A4 inhibitor

C:-Initial distribution half-life is 2-8 minutes

D:-None of the above

Correct Answer:- Option-B

Question67:-Regarding Ryanodex all are true except

A:-Available in 250 mg vials

B:-Dissolves rapidly in 5 ml of sterile water

C:-Contains very low amount of Mannitol

D:-Warming increase the solubility

Correct Answer:- Option-D

Question68:-Historically, Letheon was a name given to

A:-Ether

B:-Chloroform

C:-Nitrous Oxide

D:-Ethyl Chloride

Correct Answer:- Option-A

Question69:-IPPV may benefit patients with

A:-Chronic Pulmonary disease

B:-Hypovolemia

C:-Cardiac failure

D:-RV dysfunction

Correct Answer:- Option-C

Question70:-Advantage of neuraxial blockade over general anaesthesia in elderly undergoing orthopaedic surgery include

A:-Decrease in blood loss

B:-Decrease in stress response

C:-Decrease in DVT incidence

D:-All of the above

Correct Answer:- Option-D

Question71:-To maintain perfusion of spinal cord, the MAP must be at least

A:-60 mm Hg

B:-75 mm Hg

C:-80 mm Hg

D:-85 mm Hg

Correct Answer:- Option-B

Question72:-A patient with Duchenne muscular dystrophy is posted for scoliosis correction. Anaesthetic consideration include all except

A:-Succinyl Choline should be avoided

B:-Left ventricular ejection fraction <75% of the predicted is a contraindication for elective surgery

C:-Forced Vital Capacity (FVC) <25% of the predicted is a contraindication for surgery

D:-Avoid factors that may increase Pulmonary Vascular resistance

Correct Answer:- Option-B

Question73:-In a patient with Scoliosis, respiratory function is compromised when Cobb's angle is more than

- A:-65°
- B:-40°
- C:-25°
- D:-70°

Correct Answer:- Option-A

Question74:-Following are essential components of damage control resuscitation except

- A:-Early initiation of massive transfusion protocol
- B:-Permissive hypotension on selected population
- C:-Immediate haemorrhage control
- D:-Immediate definitive surgery

Correct Answer:- Option-D

Question75:-Lethal triad does not include

- A:-Hypovolemia
- B:-Hypothermia
- C:-Acidosis
- D:-Coagulopathy

Correct Answer:- Option-A

Question76:-Traumatic Brain Injury (TBI) can be clinically assessed by all of the following scales except

- A:-GCS
- B:-AIS
- C:-Marshall classification
- D:-Four

Correct Answer:- Option-C

Question77:-Cerebral Perfusion Pressure (CPP) is

- A:-Cerebral Blood flow-intracranial pressure
- B:-Mean arterial pressure-intracranial pressure
- C:-Mean arterial pressure-1/3 intracranial pressure
- D:-Diastolic blood pressure-intracranial pressure

Correct Answer:- Option-B

Question78:-The ideal position of the tip of the endotracheal tube should be

- A:-T4 vertebral body
- B:-T3 vertebral body
- C:-T5 vertebral body
- D:-T6 vertebral body

Correct Answer:- Option-A

Question79:-What should be the target ETAC (End Tidal Anaesthesia Concentration) to prevent awareness?

- A:-0.7 age adjusted MAC
- B:-1 age adjusted MAC
- C:-1.2 age adjusted MAC
- D:-0.9 age adjusted MAC

Correct Answer:- Option-A

Question80:-Which among the following is an EEG based monitor to assess the intra operative awareness?

- A:-Narcotrend Index
- B:-Neuro SENSE
- C:-E-entropy
- D:-All of the above

Correct Answer:- Option-D

Question81:-What changes in EEG pattern is expected as the depth of anaesthesia increases?

- A:-beta-alpha-theta-delta

B:-beta-delta-alpha-theta

C:-alpha-beta-theta-delta

D:-alpha-theta-delta-beta

Correct Answer:- Option-A

Question82:-Which of the following reflexes may be preserved in a brain-dead patient?

A:-Pupillary reflex

B:-Knee jerk

C:-Oculocephalic reflex

D:-Pharyngeal reflex

Correct Answer:- Option-B

Question83:-'Rule of 100' in the management of brain dead donor include all of the following parameters except

A:- $PaO_2 > 100\text{mmHg}$

B:-Hb  $> 100\text{ g/L}$

C:-Urine output  $> 100\text{ mL/hr}$

D:-Diastolic BP  $< 100\text{ mm Hg}$

Correct Answer:- Option-D

Question84:-The lower oesophagus sphincter tone is reduced following administration of

A:-Succinyl Choline

B:-Metoclopramide

C:-Sellick's manoeuvre

D:-Opioids

Correct Answer:- Option-C

Question85:-The temperature of the chemo perfusion used in Hyperthermic Intra Peritoneal Chemotherapy (HIPEC) is

A:-41-43 Degree Centigrade

B:-43-45 Degree Centigrade

C:-44-46 Degree Centigrade

D:-46-48 Degree Centigrade

Correct Answer:- Option-A

Question86:-While treating chronic hyponatremia, the desired increase in Plasma Sodium per day is

A:-2-4 mmol/L

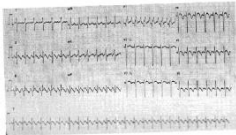
B:-3-5 mmol/L

C:-1-2 mmol/L

D:-4-8 mmol/L

Correct Answer:- Option-D

Question87:-A 33 year old second gravida, previously diagnosed to have large ASD with moderate PAH was undergoing caesarean section under GA. During the procedure, tachycardia was noted and an ECG was taken (given below). She soon developed hemodynamic compromise with blood pressure of 70 systolic and  $spO_2$  of 80%. What will be your treatment of choice?



A:-IV Lignocaine

B:-IV Amiodarone

C:-DC Version - 50 Joules

D:-DC Version - 200 Joules

Correct Answer:- Option-C

Question88:-A 65- year old male patient has h/o old Anterior wall MI and has previously undergone CABG. He has LV dysfunction with LV EF of 35%. He is on Aspirin, Statin, Ivabradine, Frusemide, Spironolactone, Sacubitril-Valsartan and Digoxin. He also has h/o COPD and is on Metered dose inhalation. He underwent a Radical neck dissection and had an uneventful surgery. He developed severe dyspnoea while in post OP ICU. He had bilateral rhonchi and crepitations. His ECG did not show any fresh ECG changes other than sinus tachycardia. Which test will be most helpful for diagnosis?

A:-BNP

B:-NT Pro BNP

C:-Troponin I

D:-Troponin T

Correct Answer:- Option-B

Question89:-A 76-year old lady with Chronic AF, and history of previous TIA and was on Dabigatran 150 mg twice daily. She also has h/o Diabetes Mellitus and Hypertension. She developed a large sub dural haematoma and is being planned for emergency surgery. Which agent will you chose for reversal of anticoagulation?

A:-Vitamin K

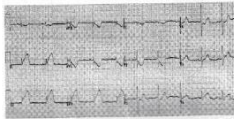
B:-Fresh frozen Plasma

C:-Idarucizumab

D:-Andexanet alfa

Correct Answer:- Option-C

Question90:-A 60 year old male diabetic patient was undergoing a total Hip replacement and developed bradycardia and hypotension during procedure. His ECG was taken and is shown below. What will be the appropriate choice of treatment?



A:-IV Unfractionated Heparin

B:-IV Streptokinase

C:-Temporary Pacemaker insertion

D:-Primary Angioplasty

Correct Answer:- Option-D

Question91:-A 58 year old gentleman was brought to critical care ICU with probable cardiac arrest. He had VF on ECG monitor and was DC verted and CPR was given. He is still having VF after multiple attempts at DC version. Which will be the first drug you will consider in this scenario?

A:-IV Amiodarone

B:-IV Lignocaine

C:-IV Epinephrine

D:-IV Dronedaron

Correct Answer:- Option-C

Question92:-You have been asked to do a pre operative evaluation for a 48 year old lady was being planned for Open Cholecystectomy. She does not have DM, Hypertension, CAD, or any other risk factors. She has good effort tolerance and can climb 3 flights of stairs without any symptoms. Her ECG and CXR are within normal limits. What will be your strategy for preoperative cardiac risk assessment?

A:-Request for Echocardiography

B:-Request for Treadmill test

C:-Request for stress Echocardiogram

D:-Proceed to surgery

Correct Answer:- Option-D

Question93:-Who coined the term Anaesthesia in 1846 to describe the insensibility due to inhalation of Ether?

A:-William Morton

- B:-Charles T Jackson
  - C:-Horace Wells
  - D:-Oliver Wendell Holmes
- Correct Answer:- Option-D

Question94:-Regarding Thromboelastography the incorrect statement is

- A:-The R time is the latent period from the time when blood is placed in a cup, until initial fibrin formation
  - B:-Bleeding associated with prolonged R time can be corrected by administration of FFP
  - C:-The maximum amplitude (mA) may be reduced in the presence of low platelet count
  - D:-Elevated A60 is a measure of coagulation factor deficiency
- Correct Answer:- Option-D

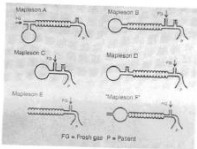
Question95:-A 45 year old lady is being planned for Abdomino Perineal Resection. She has Rheumatic heart disease-Severe Mitral Regurgitation, Moderate Mitral Stenosis, Mild Aortic regurgitation and is in sinus rhythm. What will be your strategy regarding infective endocarditis prophylaxis?

- A:-Inj Ampicillin 2 gm IV 30-60 min prior to procedure
  - B:-Inj Vancomycin 1 gm IV 30-60 min prior to procedure
  - C:-Inj Cephazolin 1 gm 30-60 min prior to procedure
  - D:-Antibiotic prophylaxis is not indicated
- Correct Answer:- Option-D

Question96:-Regarding fluid management of neonates, all are true except

- A:-Ringer Lactate is the fluid of choice for intra operative period
  - B:-A minimum haematocrit of 60% has to be maintained
  - C:-Use of 10% Dextrose is recommended to prevent hypoglycemia
  - D:-Urine output of 1-2 ml/kg/hr indicates adequate hydration
- Correct Answer:- Option-B

Question97:-What is the order of efficacy provided by the various circuits when planning for controlled ventilation in a patient under general anaesthesia?



- A:-D>B>C>A
- B:-D>C>B>A
- C:-C>A>D>B
- D:-A>B>C>D

Correct Answer:- Option-A

Question98:-Recommendations for endotracheal intubations in Covid 19 patients include all except

- A:-Always wear PPE before intubation
  - B:-Use 5 min of preoxygenation with 100% Oxygen and rapid sequence induction technique
  - C:-Awake fibre optic intubation is the technique of choice
  - D:-Standard monitoring is a must in all patients
- Correct Answer:- Option-C

Question99:-A 40 year old pregnant lady has history of unprovoked DVT and is on 20 mg Rivaroxaban once daily for DVT prophylaxis. She is being planned for Caesarean section under spinal anaesthesia. When will you stop Rivaroxaban prior to surgery?

- A:-1 day
- B:-2 day

C:-4 days

D:-7 days

Correct Answer:- Option-B

Question100:-Regarding sterilization of supra glottic airway devices, the true statement is

A:-LMA used for tonsillectomy should not be reused

B:-LMA can be sterilized with 1 hour in Glutaraldehyde

C:-Steam autoclaving is not recommended for LMA sterilisation

D:-LMA can be reused as long as there is no evidence of damage

Correct Answer:- Option-A